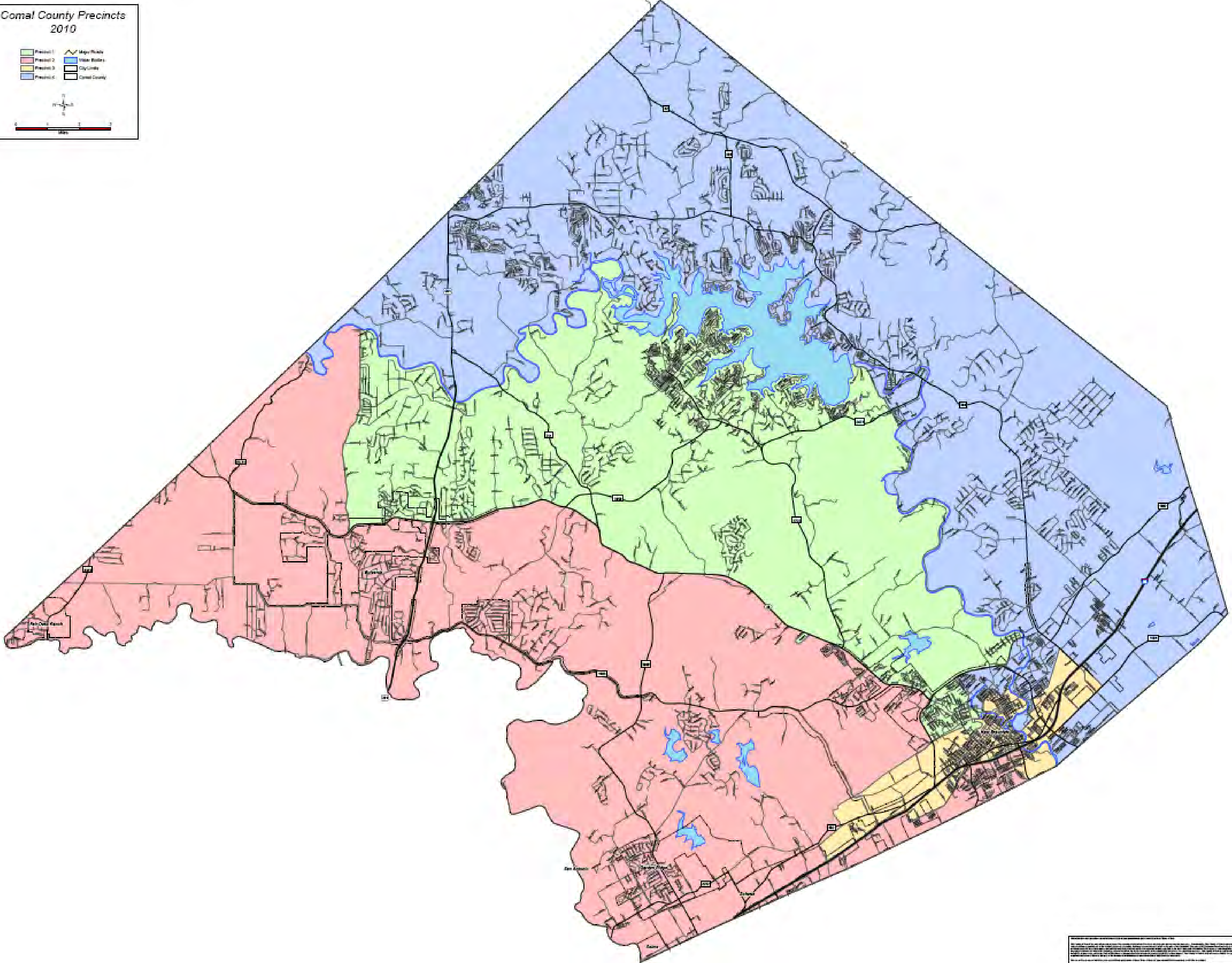




# Youth Leadership New Braunfels 2017

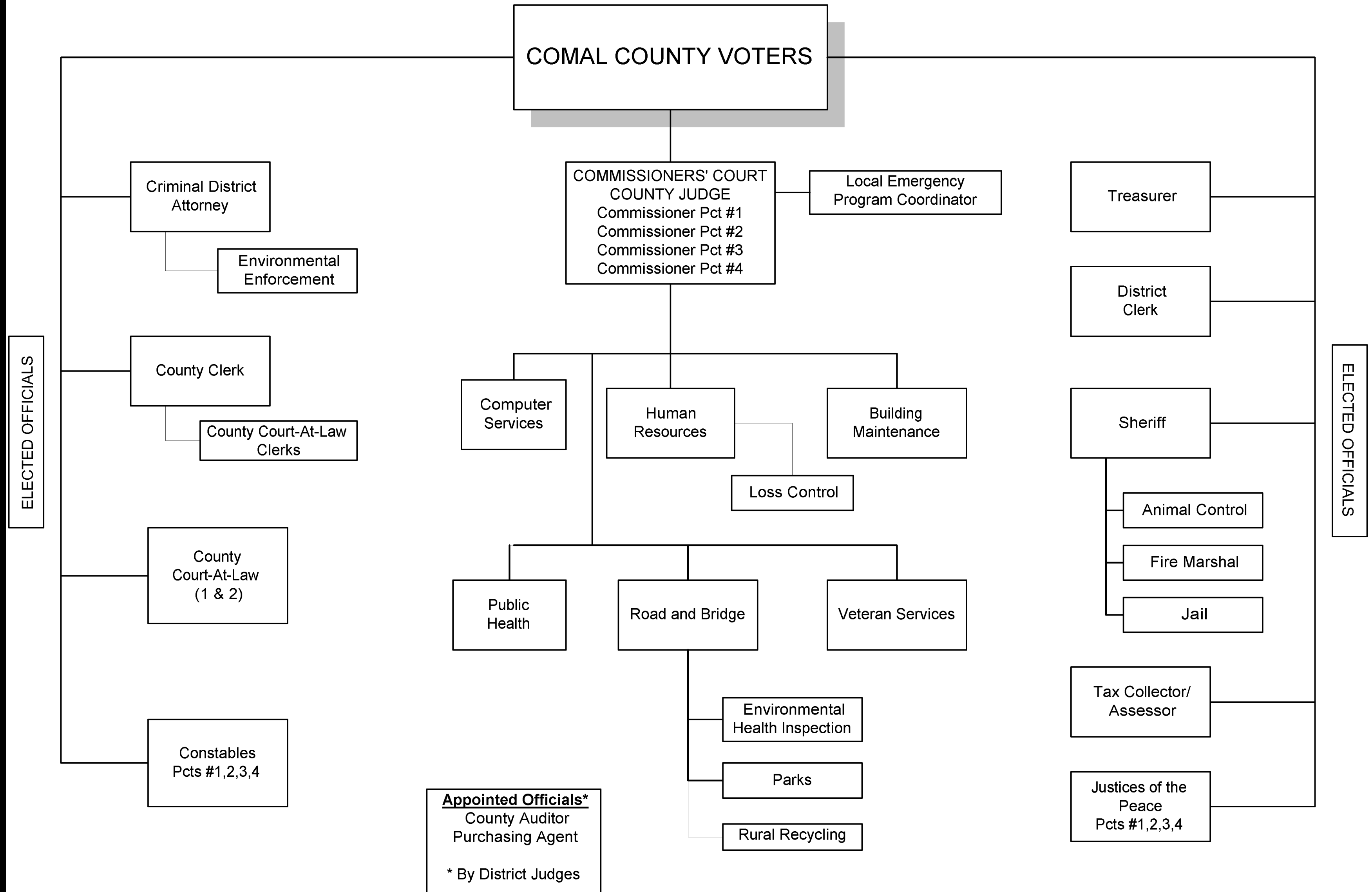
**Gomal County Precincts  
2010**

- Precinct 1
- Precinct 2
- Precinct 3
- Precinct 4
- ▲ Major Roads
- Vote Sites
- City Limits
- Gomal County



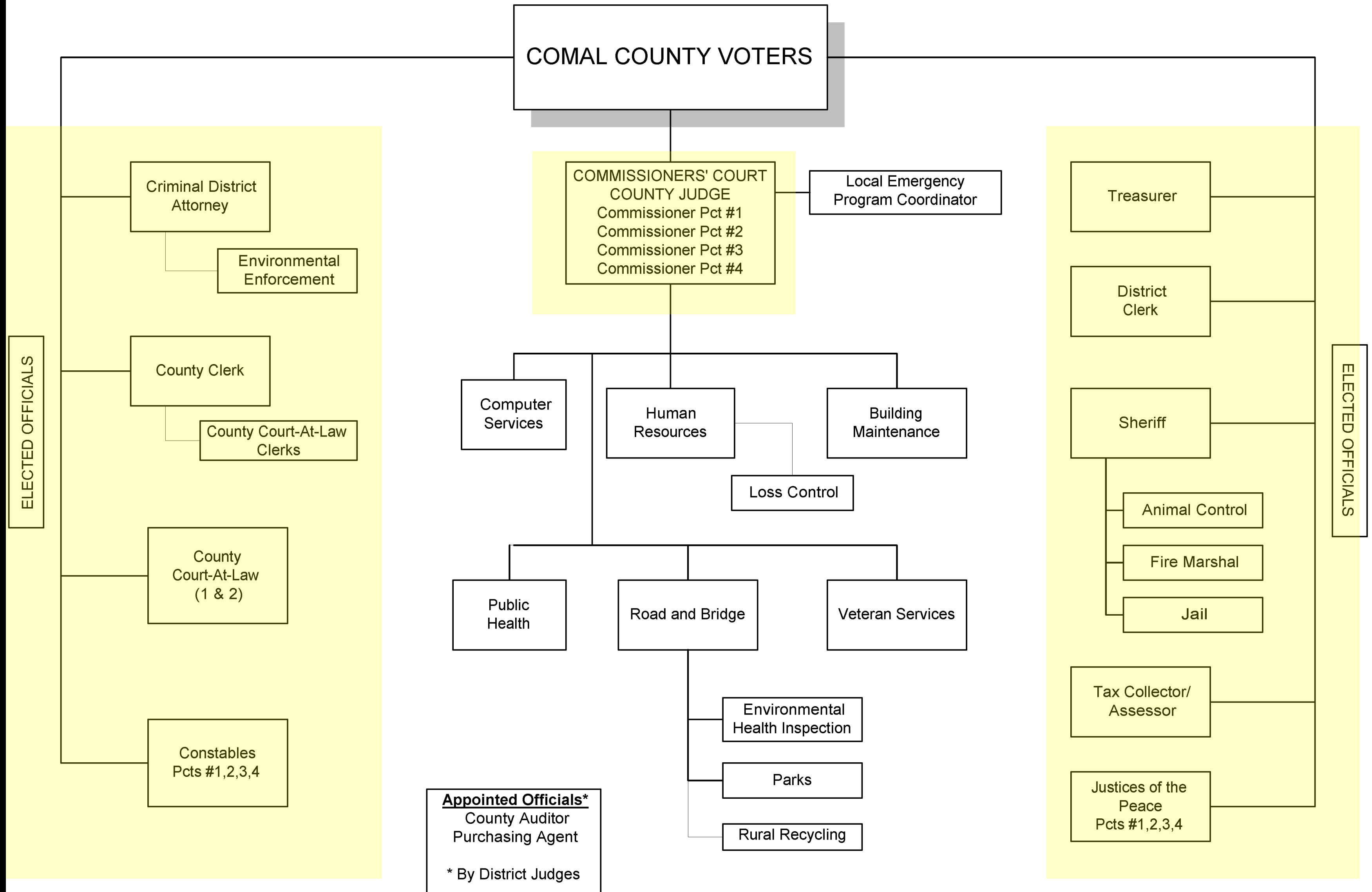
Map prepared by the Gomal County Board of Supervisors, 2010. All rights reserved. No part of this map may be reproduced without the written permission of the Gomal County Board of Supervisors. The Gomal County Board of Supervisors is not responsible for any errors or omissions on this map. The Gomal County Board of Supervisors is not responsible for any damages, including consequential damages, arising from the use of this map. The Gomal County Board of Supervisors is not responsible for any claims, including consequential claims, arising from the use of this map. The Gomal County Board of Supervisors is not responsible for any losses, including consequential losses, arising from the use of this map. The Gomal County Board of Supervisors is not responsible for any injuries, including consequential injuries, arising from the use of this map. The Gomal County Board of Supervisors is not responsible for any deaths, including consequential deaths, arising from the use of this map. The Gomal County Board of Supervisors is not responsible for any other damages, including consequential damages, arising from the use of this map. The Gomal County Board of Supervisors is not responsible for any other claims, including consequential claims, arising from the use of this map. The Gomal County Board of Supervisors is not responsible for any other losses, including consequential losses, arising from the use of this map. The Gomal County Board of Supervisors is not responsible for any other injuries, including consequential injuries, arising from the use of this map. The Gomal County Board of Supervisors is not responsible for any other deaths, including consequential deaths, arising from the use of this map. The Gomal County Board of Supervisors is not responsible for any other damages, including consequential damages, arising from the use of this map. The Gomal County Board of Supervisors is not responsible for any other claims, including consequential claims, arising from the use of this map. The Gomal County Board of Supervisors is not responsible for any other losses, including consequential losses, arising from the use of this map. The Gomal County Board of Supervisors is not responsible for any other injuries, including consequential injuries, arising from the use of this map. The Gomal County Board of Supervisors is not responsible for any other deaths, including consequential deaths, arising from the use of this map.

# COMAL COUNTY

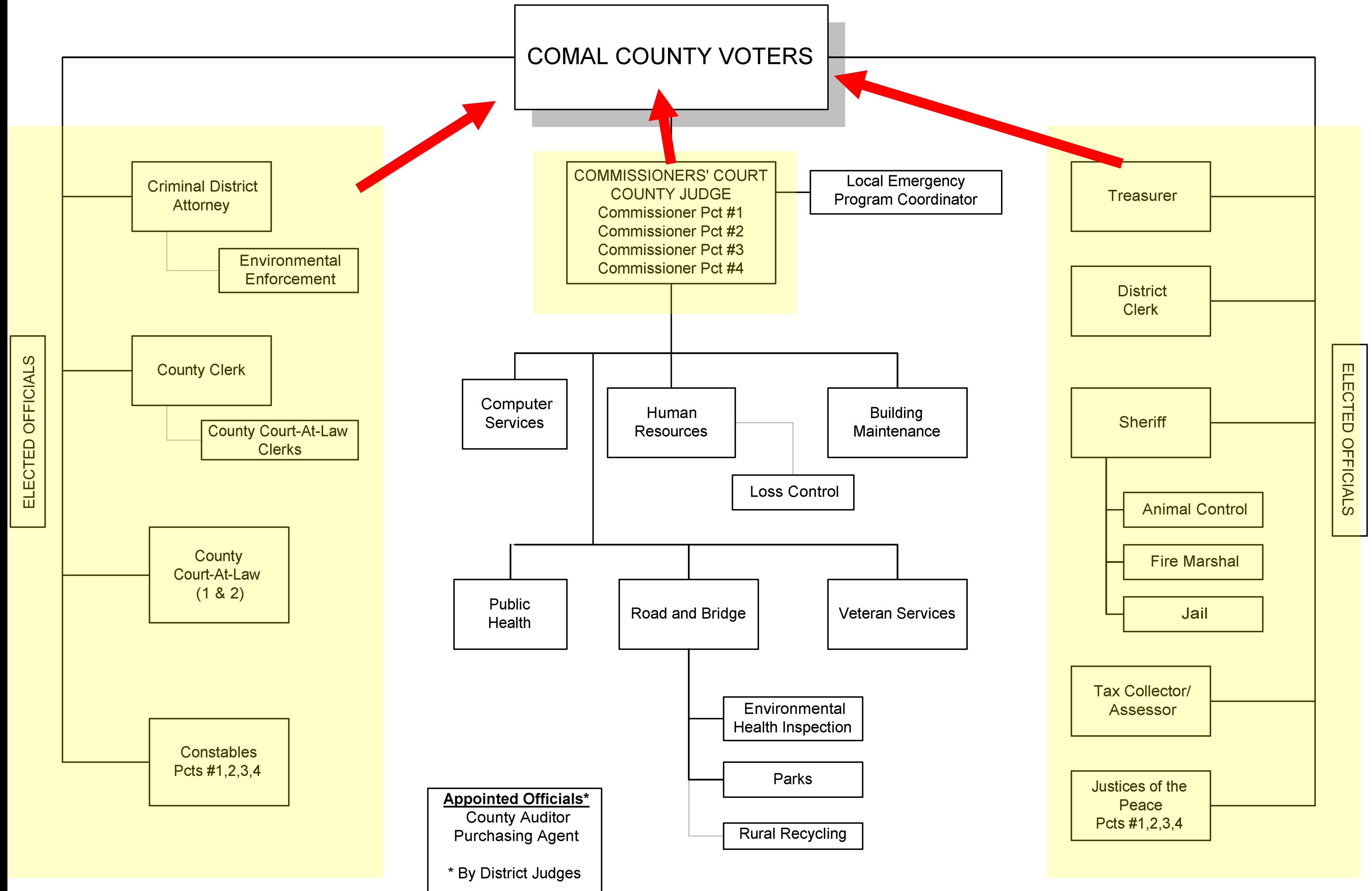


**Appointed Officials\***  
 County Auditor  
 Purchasing Agent  
 \* By District Judges

# COMAL COUNTY

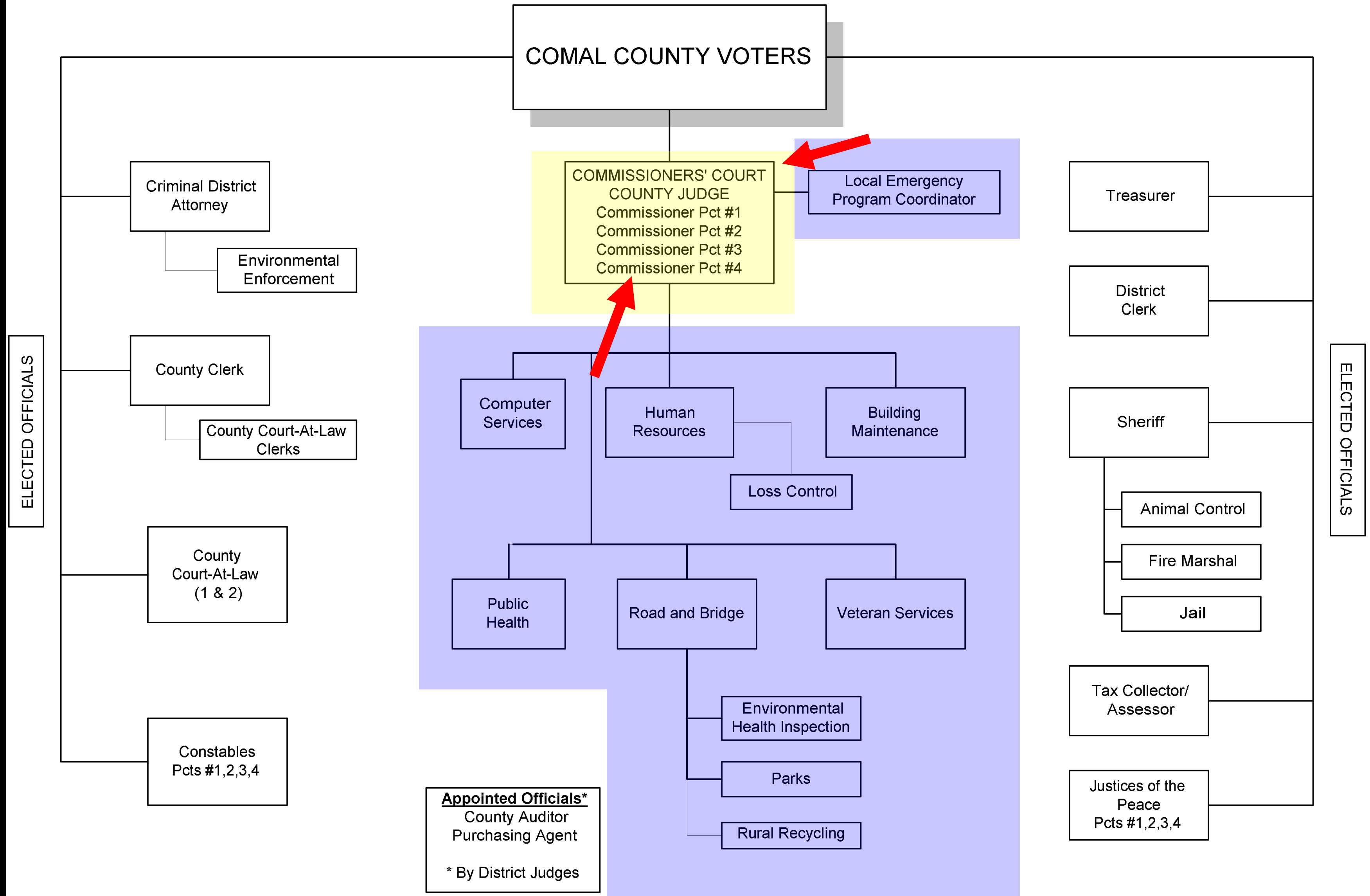


# COMAL COUNTY



**Appointed Officials\***  
 County Auditor  
 Purchasing Agent  
 \* By District Judges

# COMAL COUNTY



**Appointed Officials\***  
 County Auditor  
 Purchasing Agent  
 \* By District Judges



# Comal County Engineer's Office



# Road Department



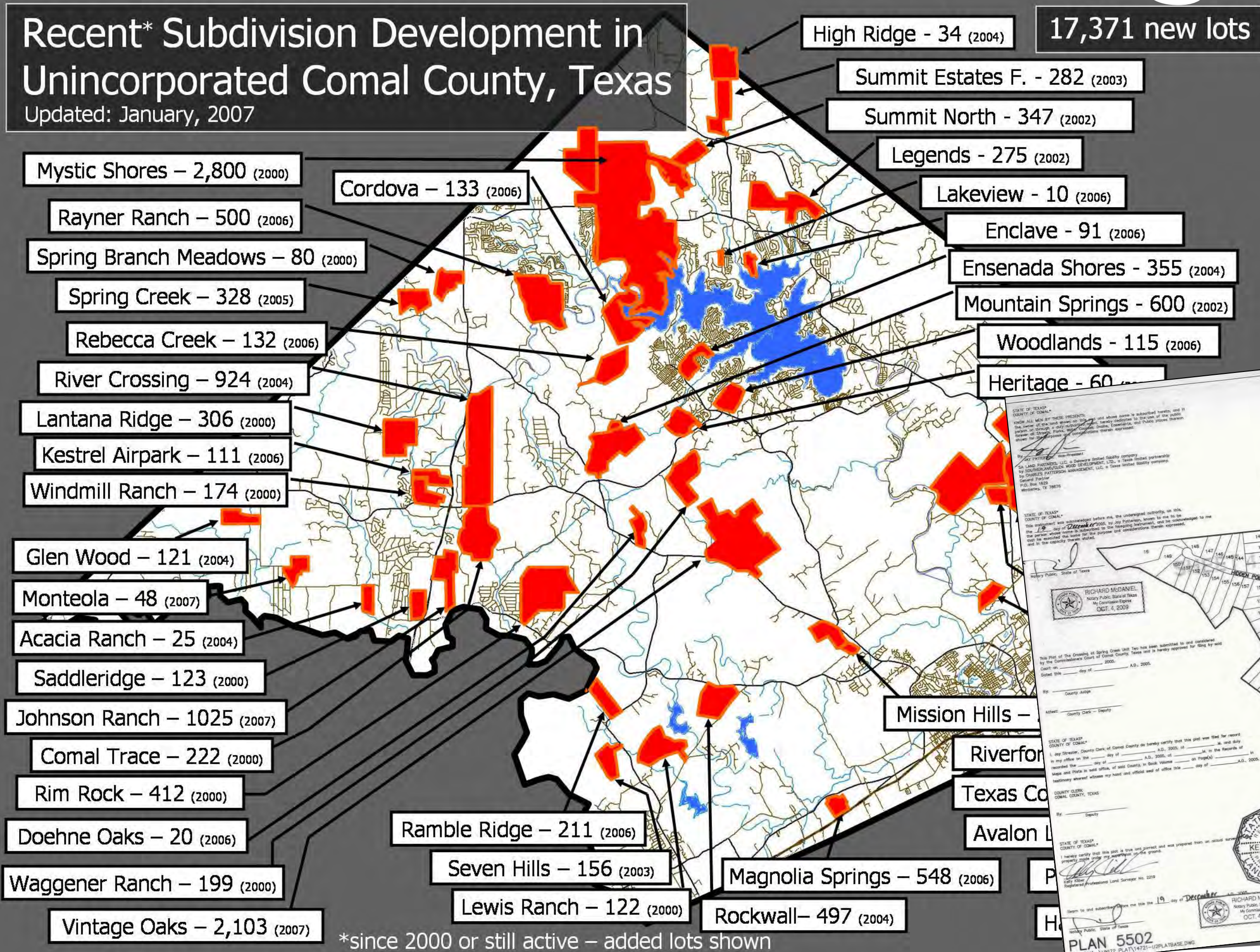
- 850 miles
- In-house paving
- Vehicle Maintenance



# Subdivision Regulation

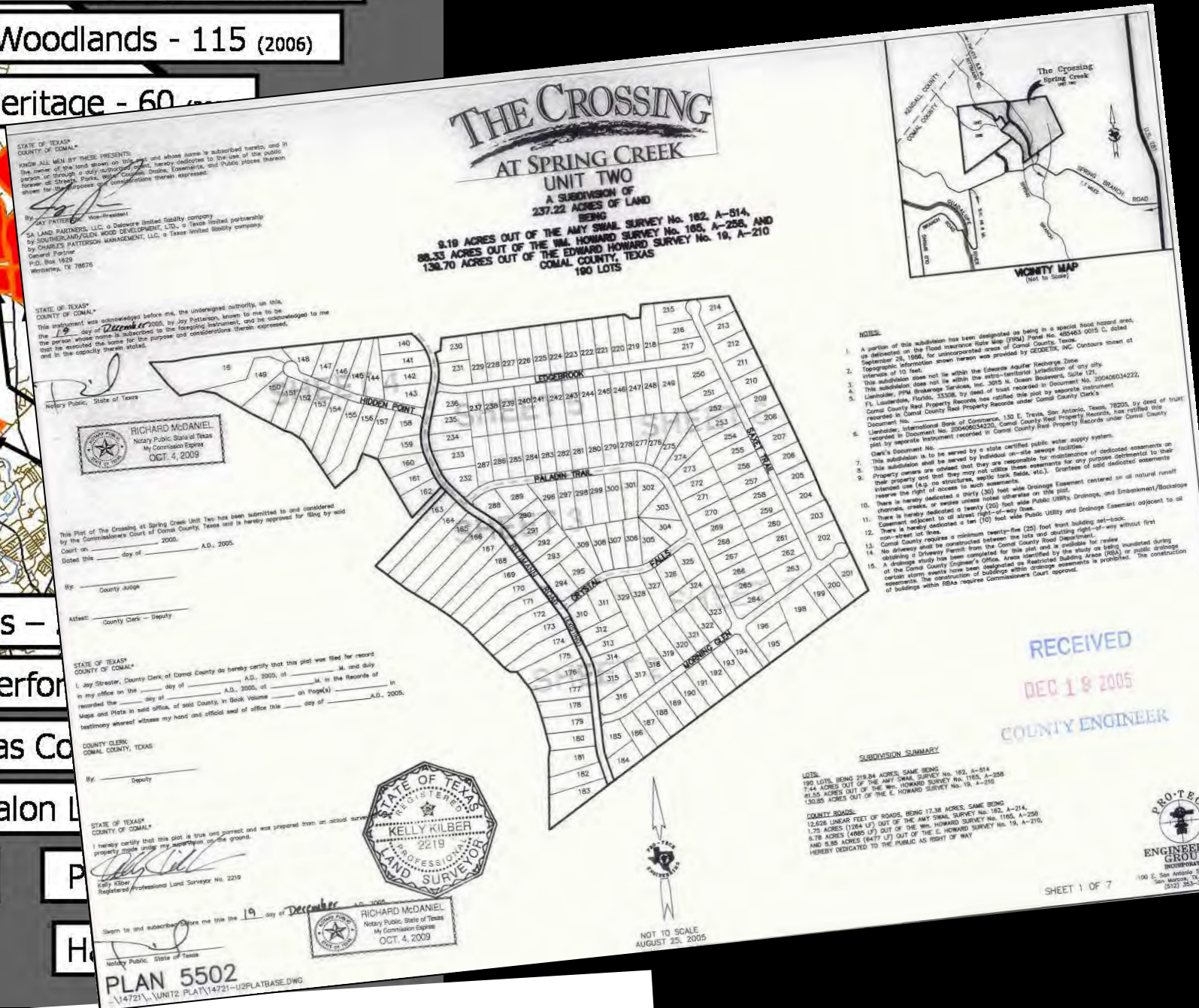
## Recent\* Subdivision Development in Unincorporated Comal County, Texas

Updated: January, 2007



\*since 2000 or still active - added lots shown

- Water Availability
- Storm Water Impact
- Utility Districts



# 19,000 Lots in about 8 years

# OSSF Regulation

- Permitting
- Enforcement
- Solid Waste
- Junk Vehicles











05/20/2008



12/16/2008





# Flood Plain Regulation

Comal County Internet Mapping Service - Microsoft Internet Explorer

Address: <http://www.co.comal.tx.us/gis/website/comal14/viewer.htm>

Comal County Internet Mapping Service

Layers:

- Comal County
- Precinct
- Cities
- Schools
- Transportation
- Aerial Photos
- Hydrology/Flooding
  - Existing FEMA Floodplain
  - Proposed FEMA Floodplain
- Lakes
- Streams
- Edwards Aquifer
- Districts & Parcels
  - WORD District
  - Parcels
- Soil Types
- USGS Topographic Maps
- Background

Refresh Map

Auto Refresh

Help:

- A closed group, click to open.
- An open group, click to close.
- A map layer.
- A hidden group/layer, click to make visible.
- A visible group/layer, click to hide.
- A visible layer, but not at this scale.
- A partially visible group, click to make visible.
- An inactive layer, click to make active.
- The active layer.

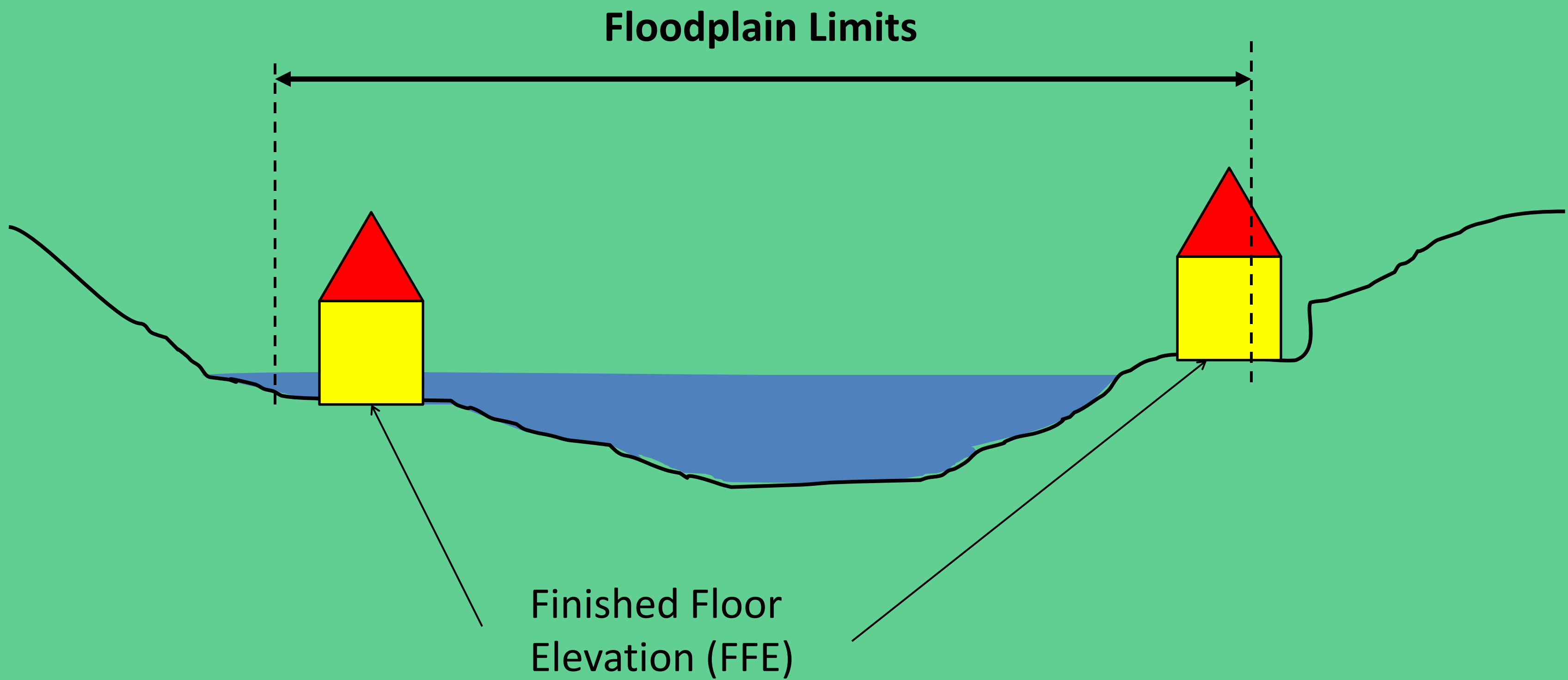
Zoom In

Map: 2167622, 13822129.91 -- Image: 938, 293 -- ScaleFactor: 12.180355643630601

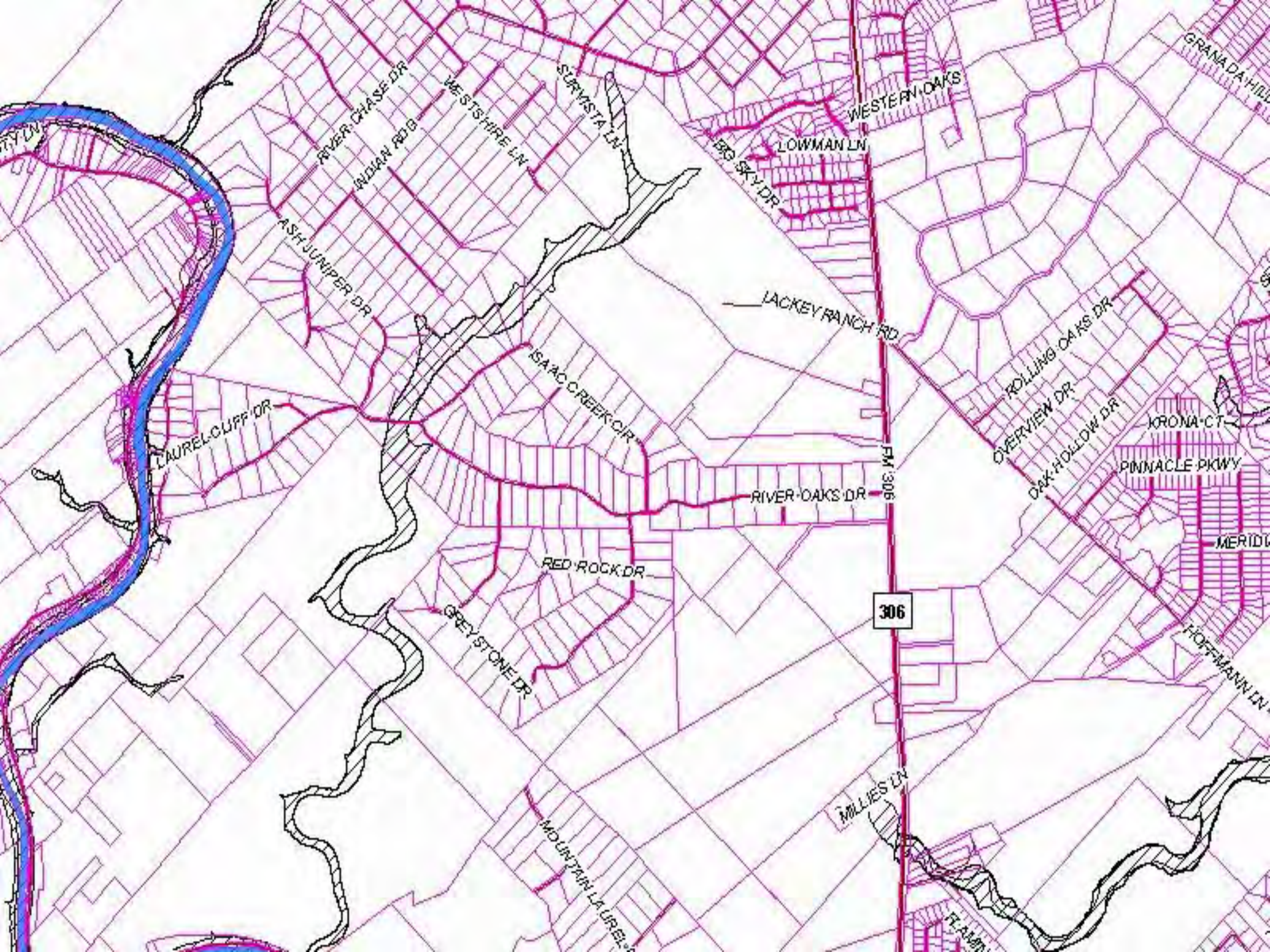
start | Inbox - Microsoft Out... | Microsoft PowerPoint... | Comal County Intern... | 5:17 PM

- New Maps
- Enforcement

# Water Surface Elevation (WSE) Comparison



100 – Year Storm



LAUREL CLIFF DR

ASH JUNIPER DR

RIVER CHASE DR

INDIAN RD

WESTSHIRE LN

SURVISTA LN

BIG SKY DR

LOWMAN LN

WESTERN OAKS

GRANADA HILL

LACKEY RANCH RD

ISAAC CREEK CIR

ROLLING OAKS DR

OVERVIEW DR

OAK HOLLOW DR

KRONA CT

Pinnacle PKWY

RIVER OAKS DR

FM 306

RED ROCK DR

GREYSTONE DR

306

MOUNTAIN LAUREL DR

MILLIES LN

HOFFMANN LN

MERIDIAN

FLAMINGO

# Recycling Department



- Rural Collection
- Schools
- Brush Chipping





RESOURCE DR



The Single Stream Collection process collects unsorted recyclables and loads them into a rear-end refuse compaction truck at the remote collection site.





Plastic  
Aluminum  
Paper  
Glass  
Comal County,  
Recycling In Motion  
It's Not A Garbage Truck ... It's A Recycling Truck.  
For info, call  
(830) 643-3761

Plastic  
Aluminum  
Comal County,  
Recycling In Motion  
It's Not A Garbage Truck ... It's A

Little Mexico

Cuscos





Unsorted recyclables are delivered to a Materials Recycling Facility.

The Materials Recycling Facility utilizes manual and automated processes to sort the recyclables.



Equipment separates paper from the glass and magnetic metals.



The baled materials are stockpiled and ultimately sold.





The Comal County Brush Recycling Program diverts vast amounts of material away from our landfill.



At the Brush facility, residents are charged a nominal;  
fee to drop off green waste.



The brush is mulched by the County and stockpiled.  
Mulch is available to residents at no charge.







DEERE

444J

MACK

215

RECYCLING

The County produces a high quality mulch.





# Parks Department

- Hidden Valley Sports Park



# Parks Department

- Jumbo Evans Sports Park
- Project Selection Process



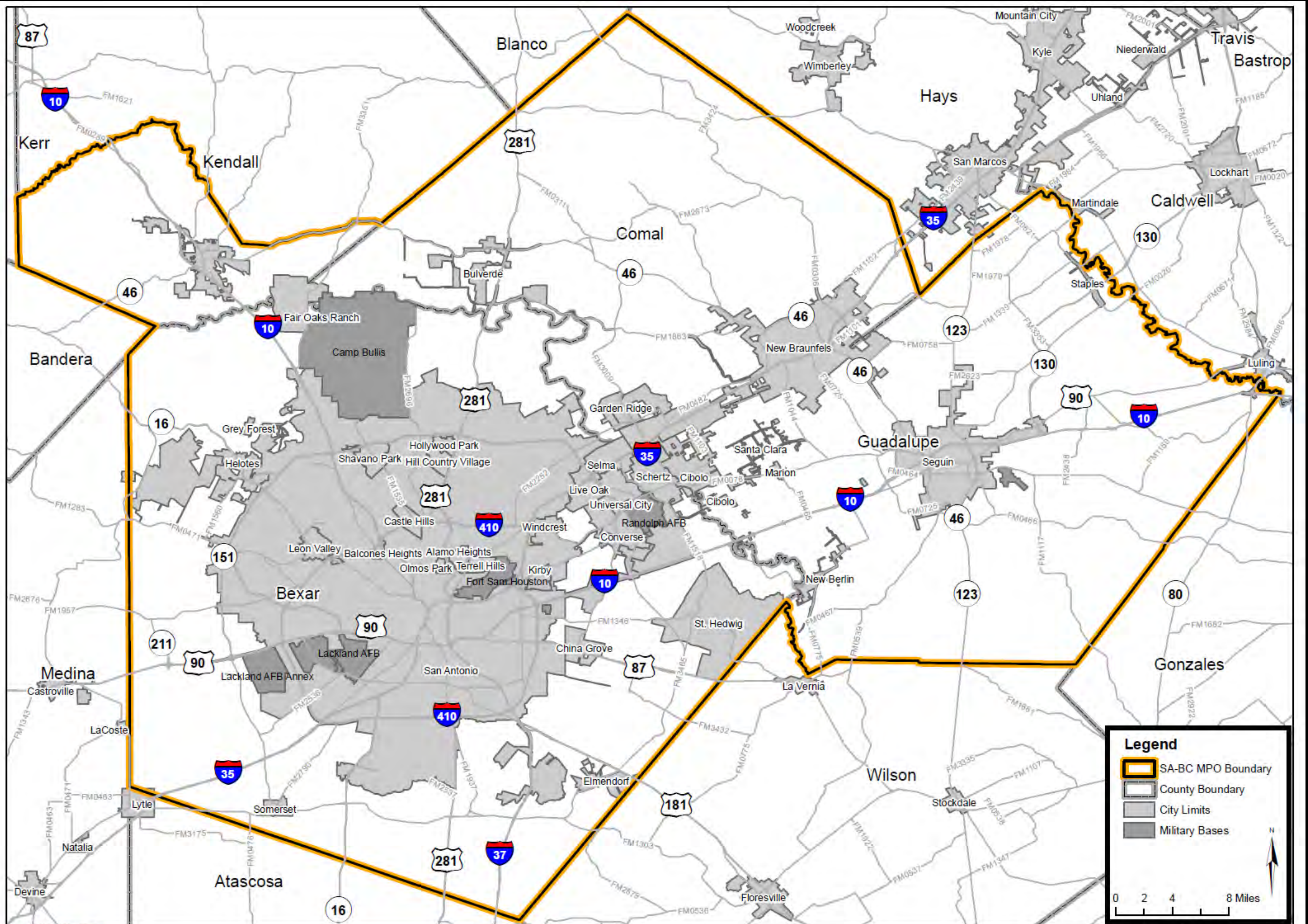


# Comal County Engineer's Office

- Road Department
- Subdivision Regulation
- OSSF Regulation
- Flood Plain Regulation
- Rural Recycling
- Parks



- **Large Projects**
- **TxDOT Bridges**
- **TxDOT Pass Through Financing**

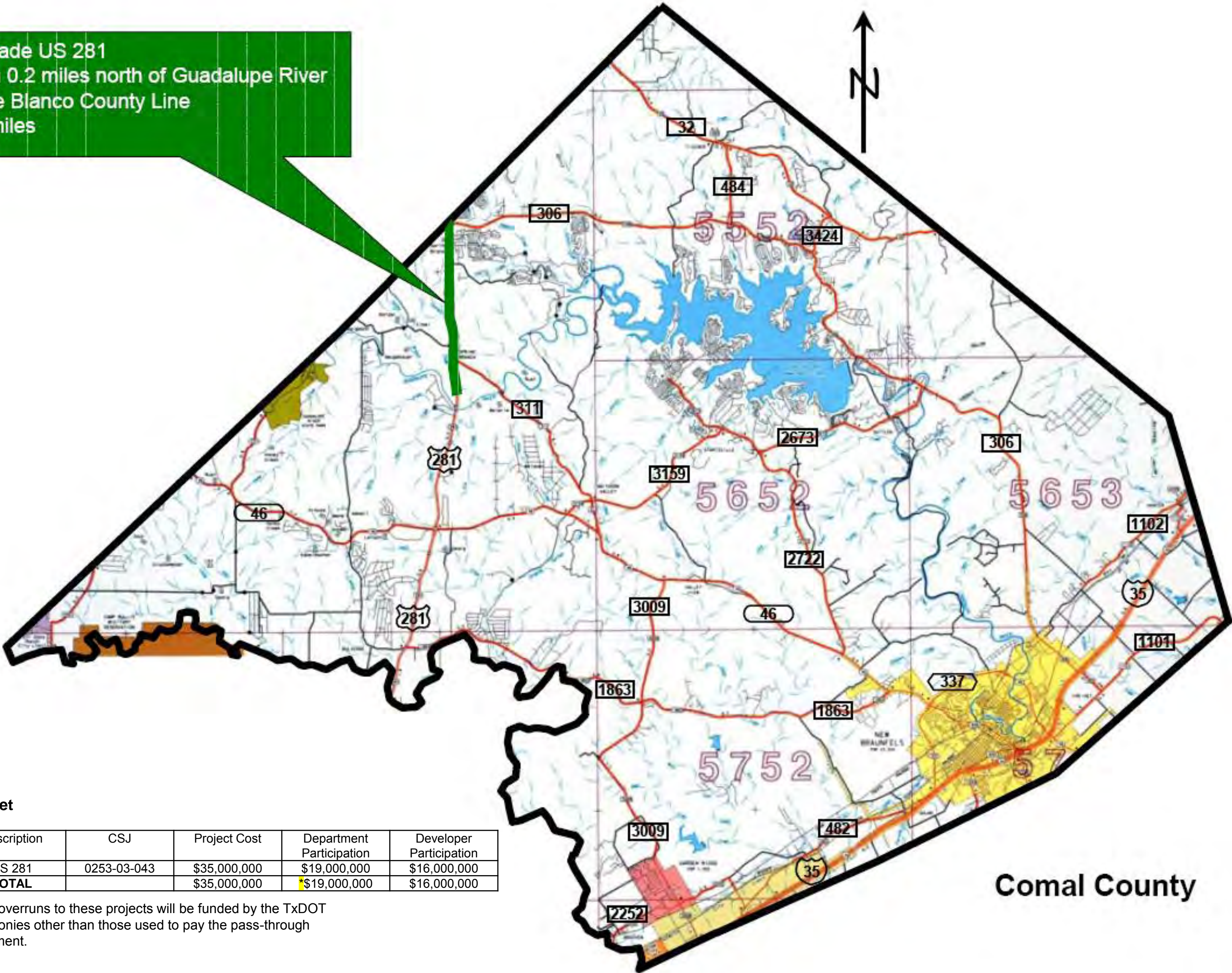




# COMAL COUNTY

## Pass-Through Financing US 281

Upgrade US 281  
From 0.2 miles north of Guadalupe River  
to the Blanco County Line  
5.6 miles



**Budget**

Description	CSJ	Project Cost	Department Participation	Developer Participation
US 281	0253-03-043	\$35,000,000	\$19,000,000	\$16,000,000
<b>TOTAL</b>		\$35,000,000	\$19,000,000	\$16,000,000

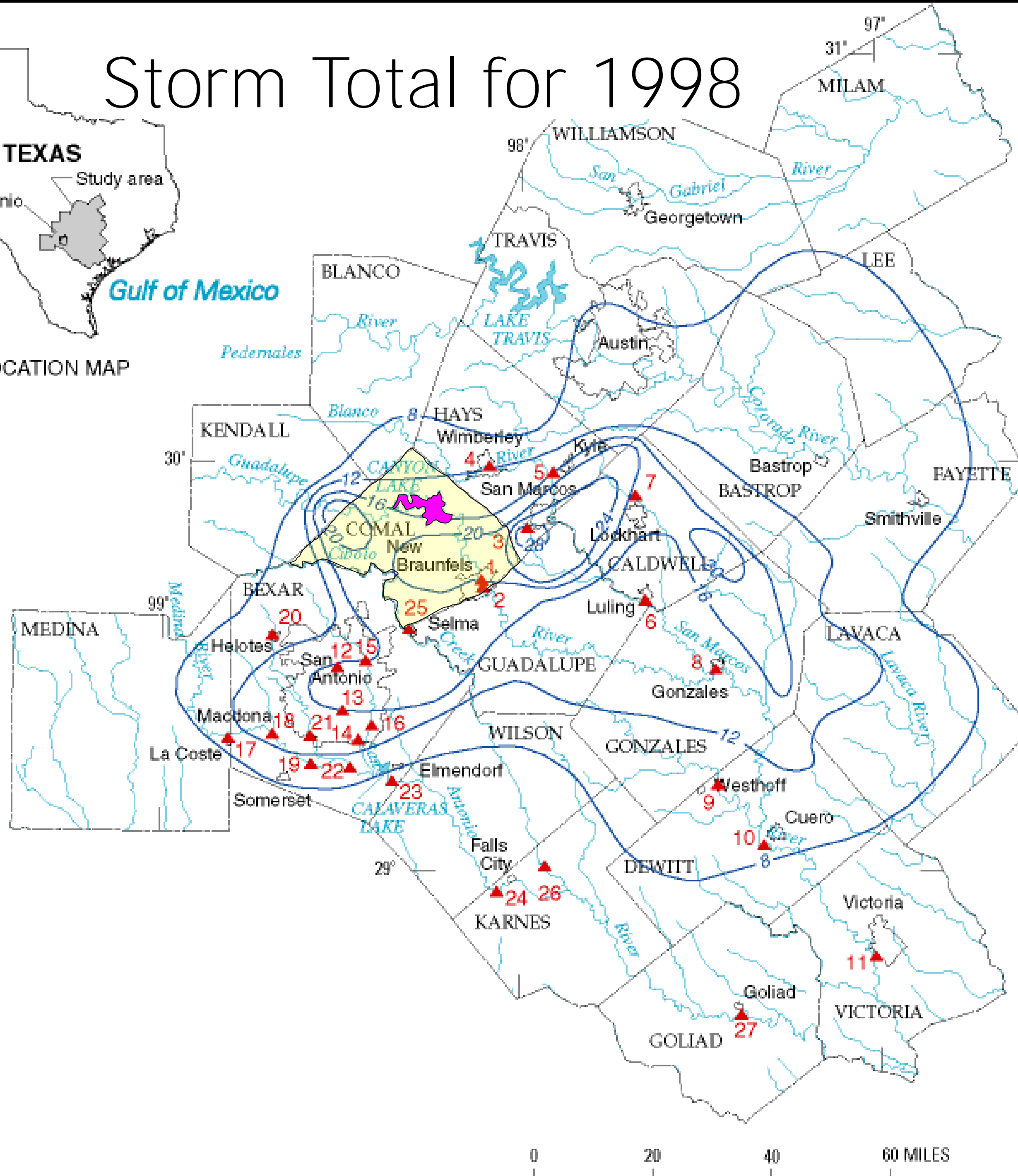
\* Any overruns to these projects will be funded by the TxDOT with monies other than those used to pay the pass-through agreement.

**Comal County**

# Storm Total for 1998



LOCATION MAP



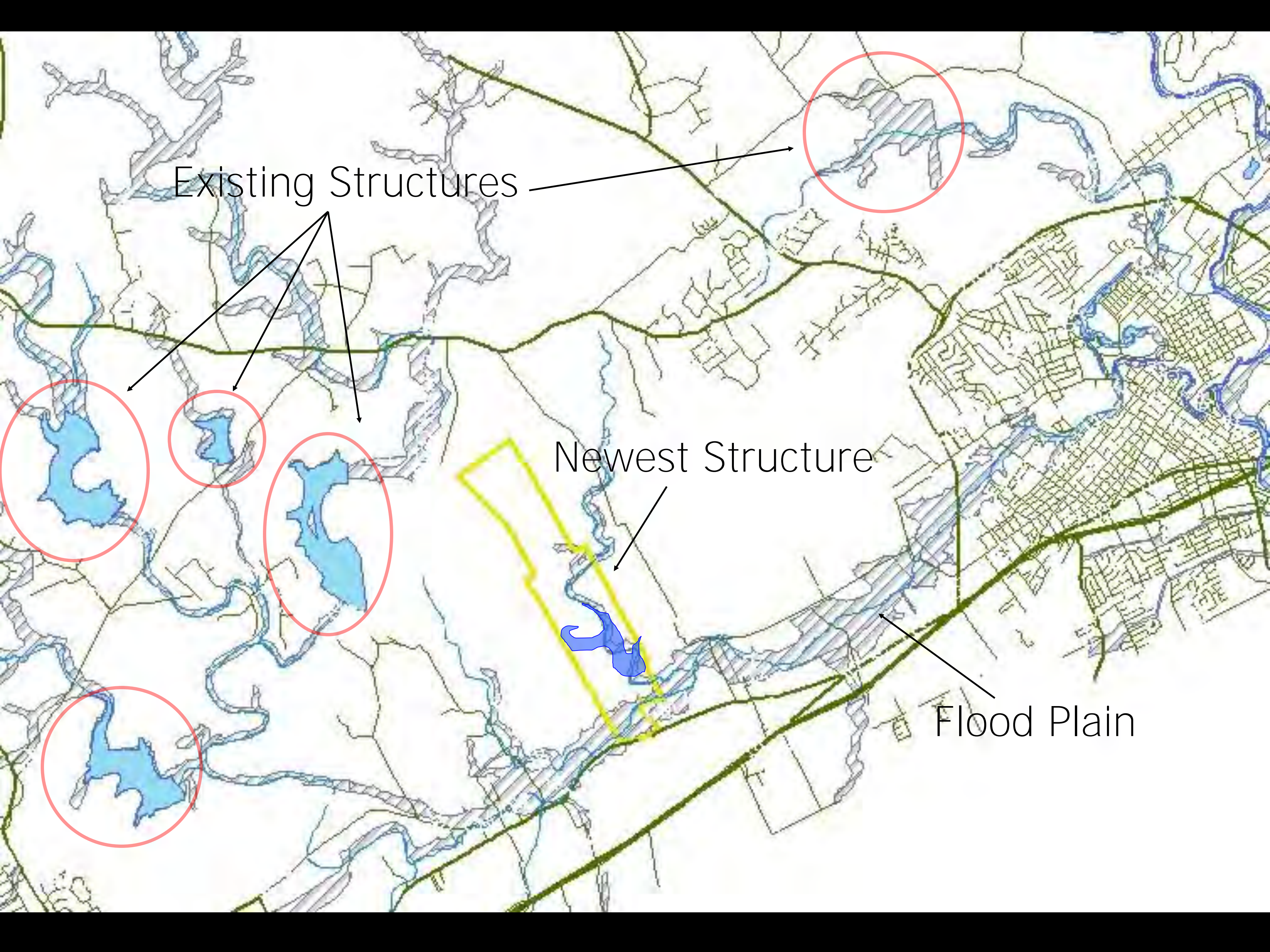
**Canyon Dam**

**Outlet Works**

**Emergency  
Spillway**

**Impoundment  
Area**





Existing Structures

Newest Structure

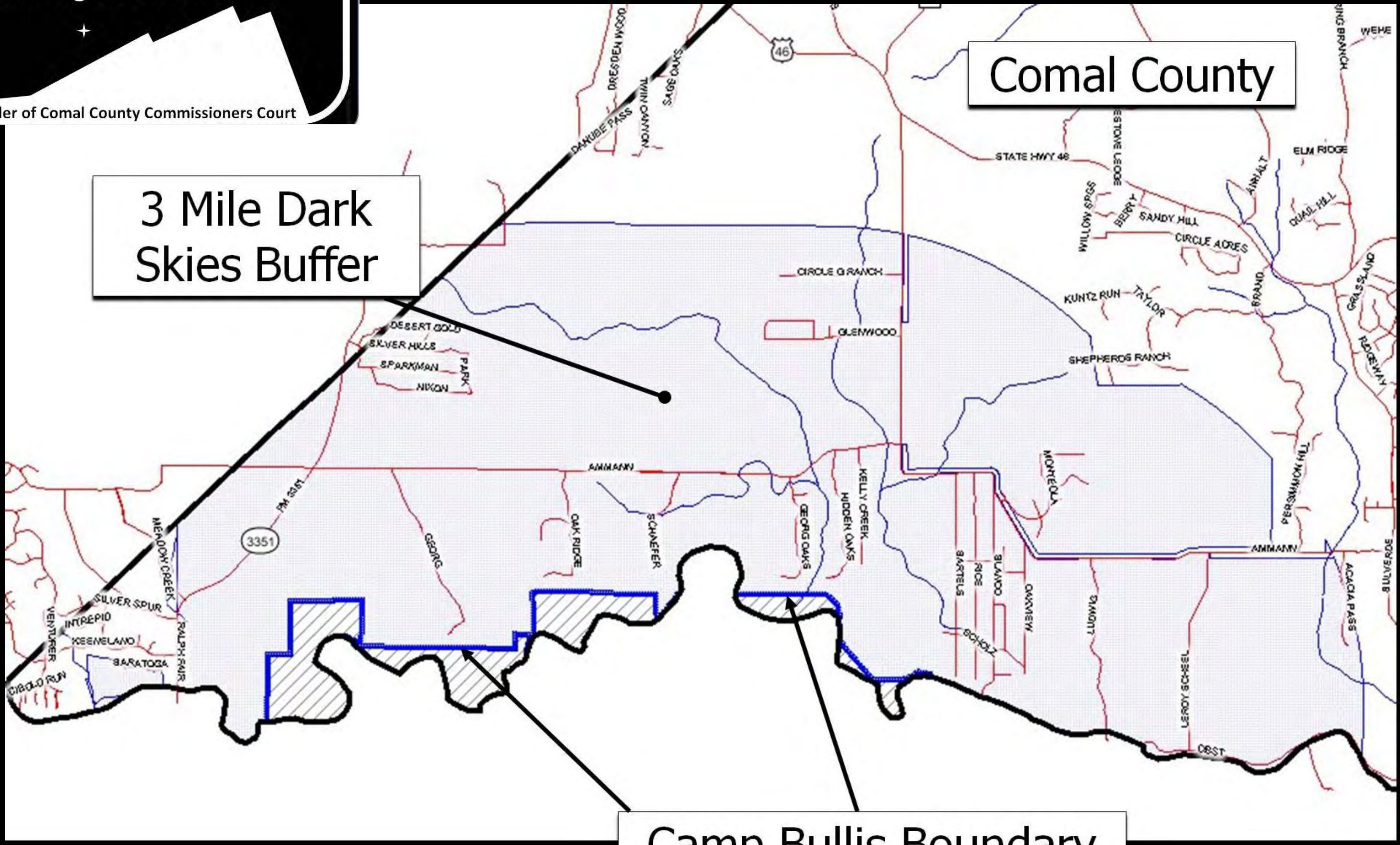
Flood Plain

# Entering Camp Bullis Dark Skies Zone

Permit required for all New  
Outdoor Lighting

Call (830) 608-2090 or visit  
[www.cceo.org](http://www.cceo.org) for information

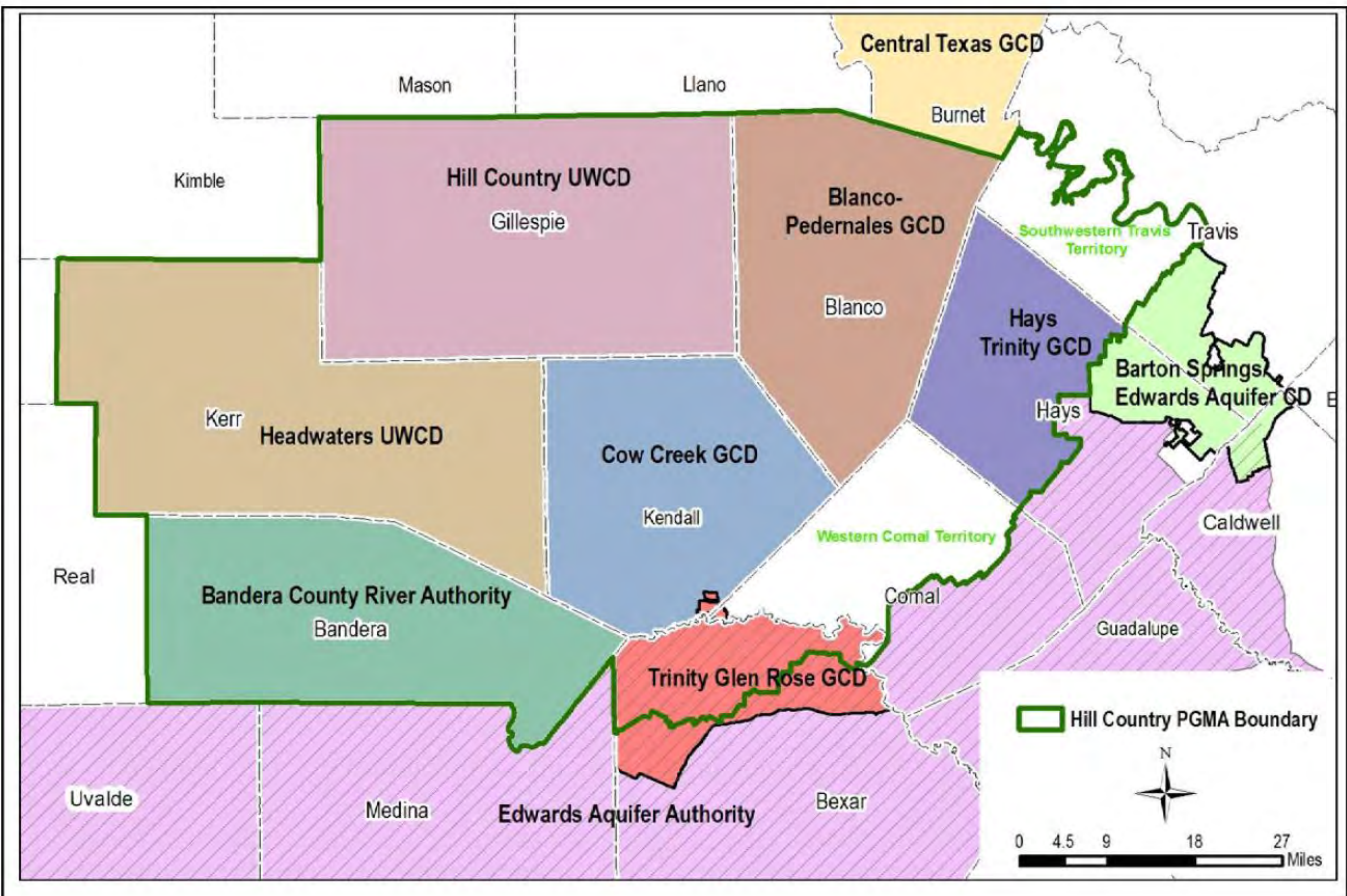
By Order of Comal County Commissioners Court

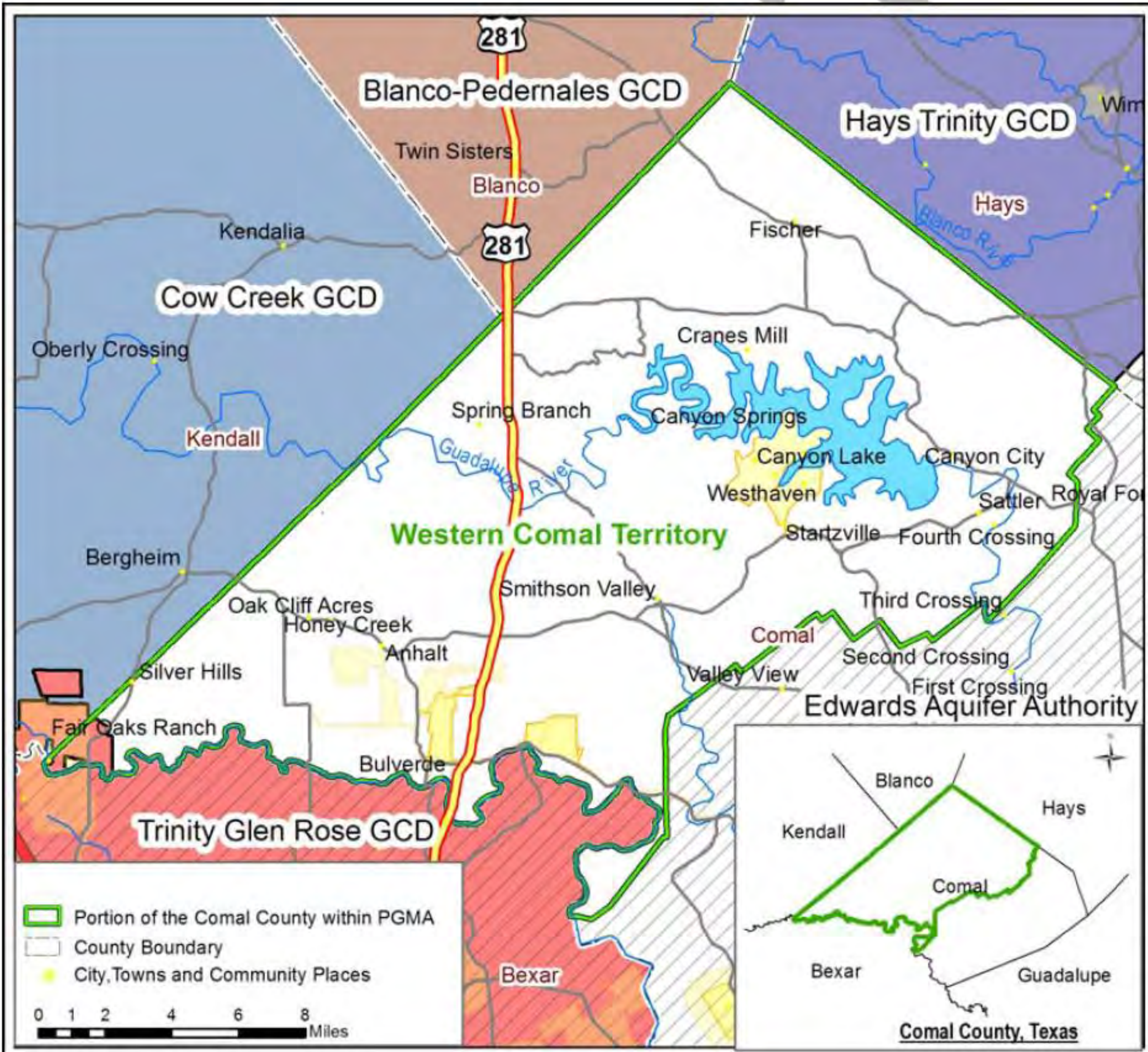


3 Mile Dark  
Skies Buffer

Comal County

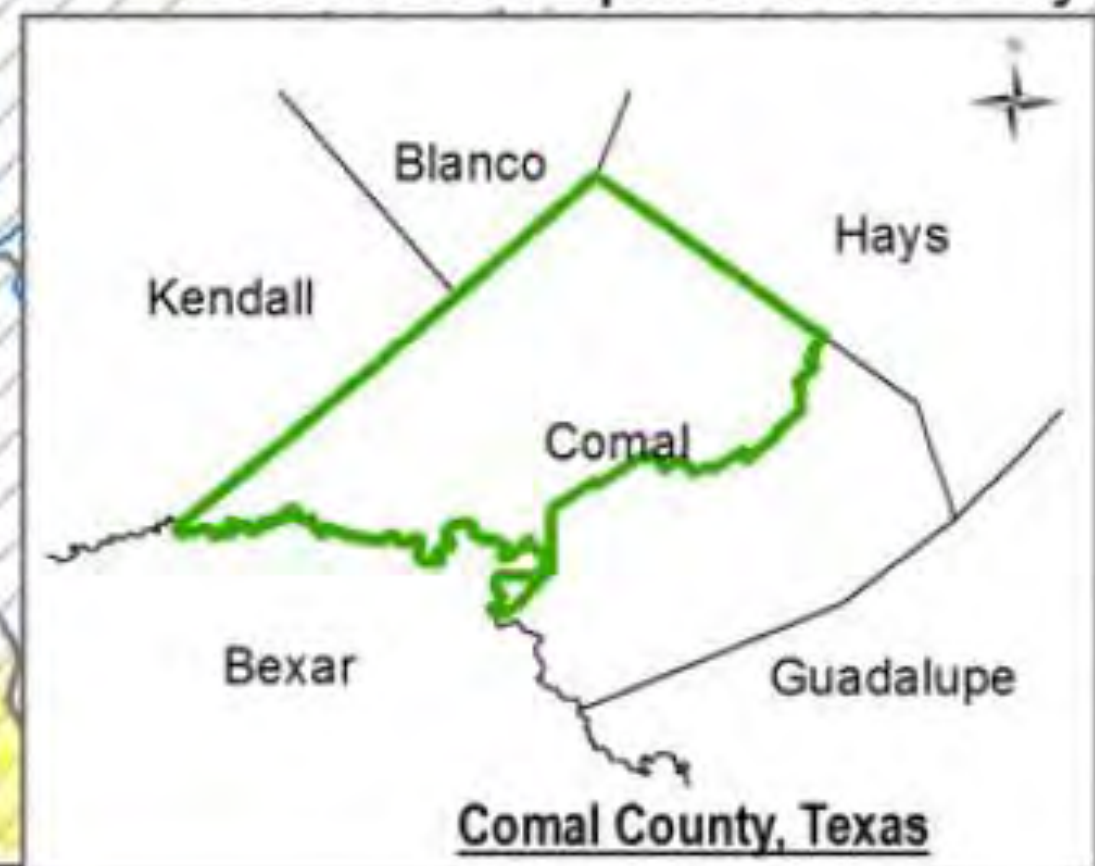
Camp Bullis Boundary





- Portion of the Comal County within PGMA
- County Boundary
- City, Towns and Community Places

0 1 2 4 6 8 Miles



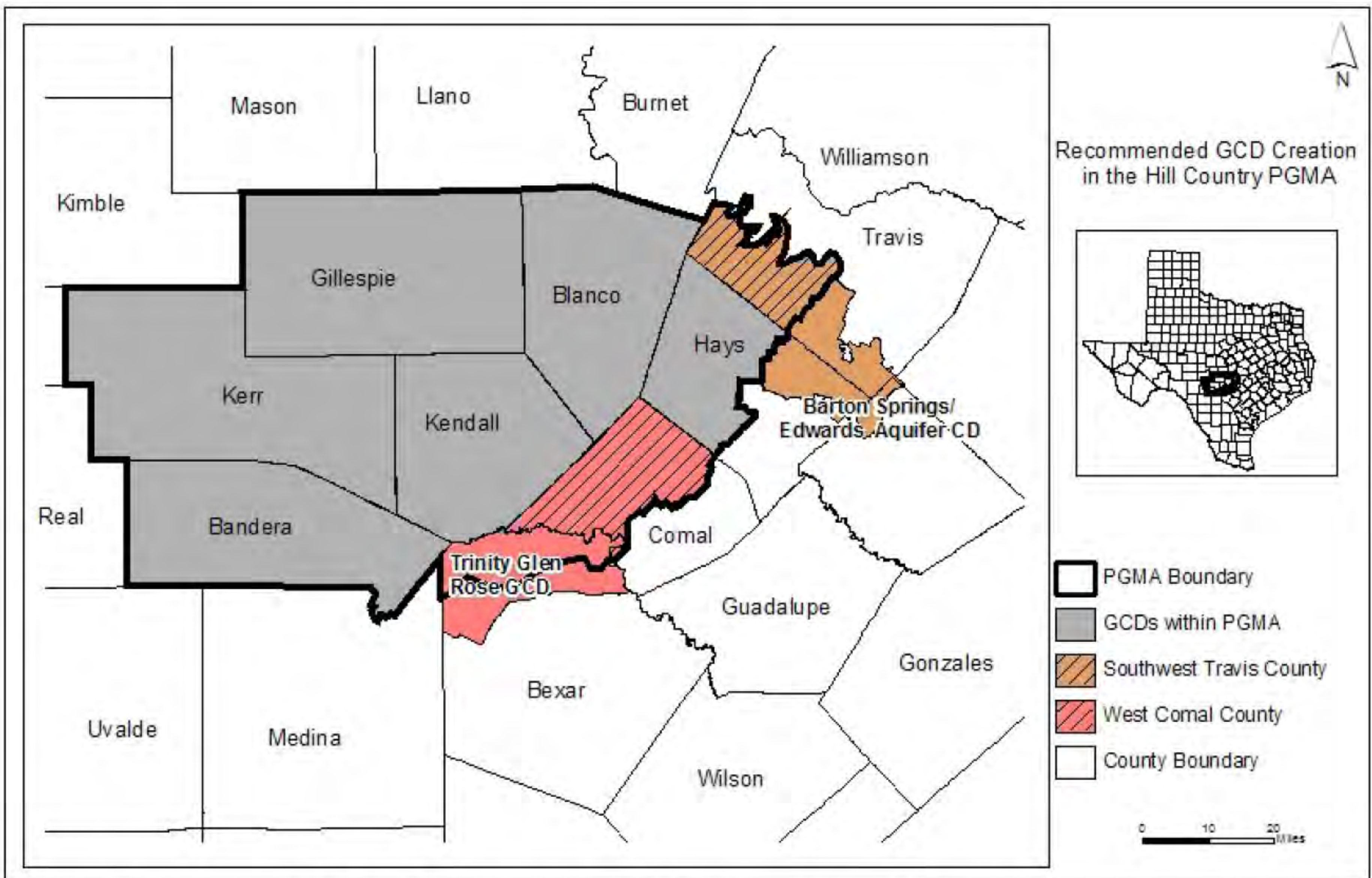


Figure 7. Recommended GCD Creation in the Hill Country PGMA.



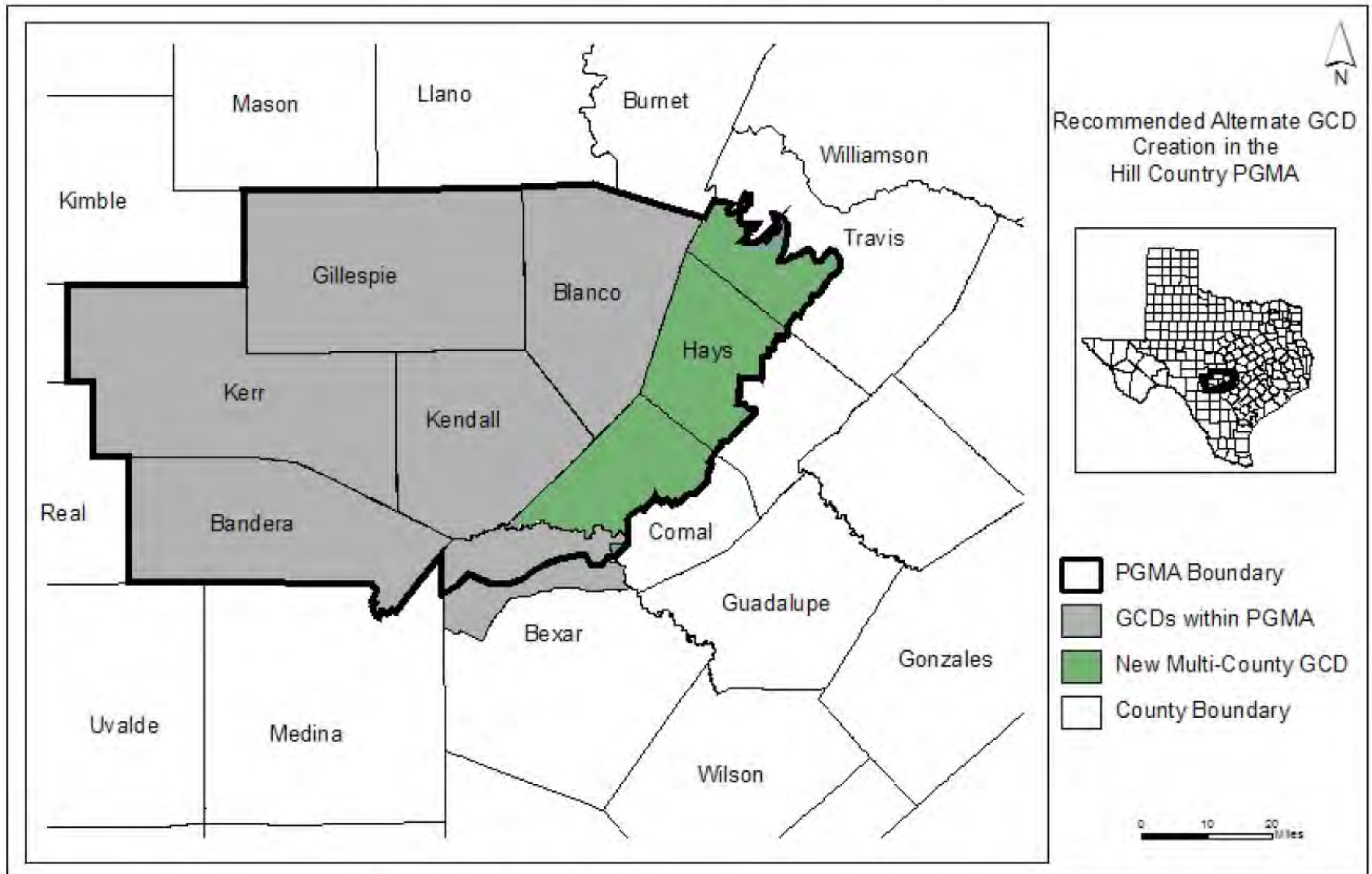


Figure 8. Recommended Alternate GCD Creation in the Hill Country PGMA.



# Youth Leadership New Braunfels 2017